

# THE USER IN FOCUS

Designing great acoustic environments with **the users in mind** can be a challenge when combined with the practicalities of an **office space**. However, including a **human-centric approach** to a building's design can pay-off in the long run, creating acoustic spaces that support the organisations they accommodate. Choosing the right acoustic solution can make the difference between creating an average or great office environment.

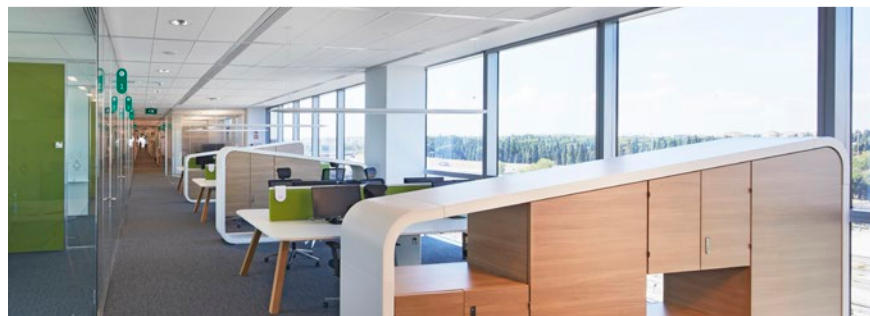
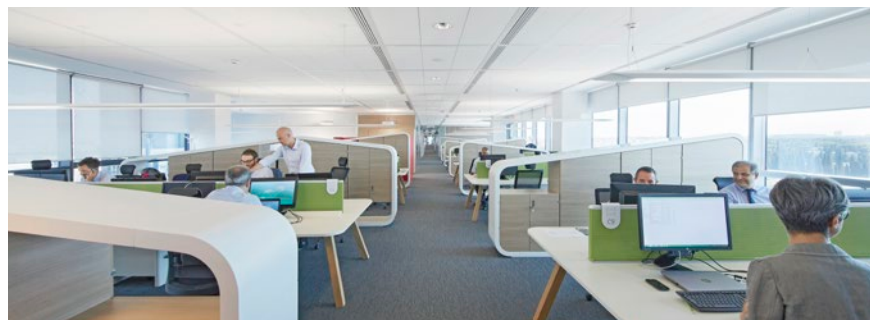


## A FLOATING SKY

BNL-BNP Paribas, an important player in the banking sector, decided to move more than 3,000 of its employees to its new headquarters in Rome. This unique, state-of-the-art office building almost floats in the air, suspended between the sky and the earth. The massive 70,000 m<sup>2</sup> building stretches over 230 m and is divided into 12 storeys, with 4 underground levels.

## BIG AMBITIONS OUTSIDE AND IN

The architects of the new BNP-BNL Paribas had a grand ambition for both the interior and exterior of the building. Aiming for a LEED Gold certification meant that areas like energy efficiency, lighting and acoustics were high on the agenda. It was important to create a space that supported the people using it and not force people to adapt to it. Interior designer, Paolo Mantero from Studio Mantero explains, *“Open-spaces in particular present the challenge of acoustic reverberation and this is why we decided to choose a ceiling with high acoustic absorption and improved sound insulation, reducing the overall sound level and creating more comfortable environments in which everyone can easily concentrate”.*



## ACOUSTICS AND DESIGN COMBINED

The Rockfon dB solution that was chosen did not only solve the acoustic challenges of a modern and flexible workplace, it also perfectly fit the minimalistic and modern design of the building itself.

*“The choice of the D / AEX-edge combination has a semi-concealed ceiling aspect on one side and a design line on the other. We chose extra long panels to further highlight the longitudinal feature of the spaces”*, Architect Alfonso Femia from ‘Atelier Alfonso Femia’ highlights.



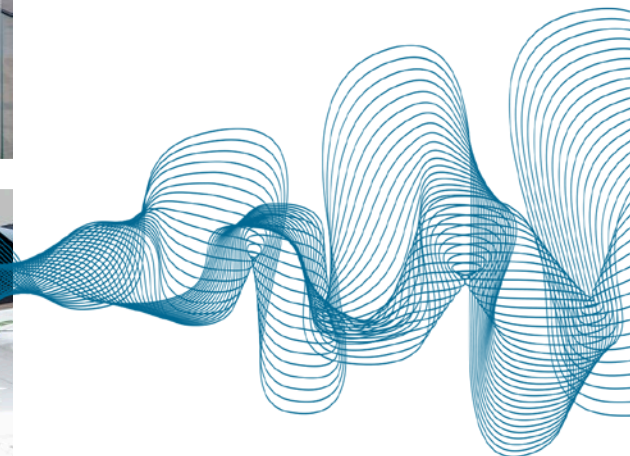
# BUILDING FOR CONFIDENTIALITY

The modern office is a dynamic work space that should both promote collaboration among employees and respect the need for privacy in cases of concentrated work and confidential discussions. The needs of the modern office challenge interior design and intensify **acoustic requirements** in order to successfully achieve an **optimum indoor environment**.



## THE FUTURE OFFICE

Sundtkvartalet is a new, 31,000 m<sup>2</sup>, modern office complex that blends seamlessly in with the surrounding buildings of the old Oslo neighbourhood. Skanska Norway is the largest tenant, with 400 people using 25% of the total space. The building has a total capacity of 1,500 office workspaces.





## A QUIET SPACE

Skanska's needs and demands lead the project agenda, where effective, flexible and comfortable work stations were the focus. As Skanska work with contracts and other sensitive information, a high degree of confidentiality and privacy was the focus of the interior design plan. *"It is crucial that conversations about such matters cannot be overheard"*, says Øivind Hansen, Facility Manager at Skanska.



## THE RIGHT COMBINATION

Rockfon® dB is installed in most offices in Sundtkvartalet. It provides enhanced room to room sound insulation, ensuring that noise does not travel from one office to another, and it delivers a high level of sound absorption, creating a comfortable acoustic climate. As Øivind says, *"In our previous office you were able to hear what was being discussed in the adjoining meeting rooms, but this has significantly improved in the new offices"*.

